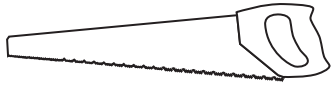
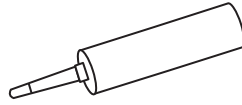


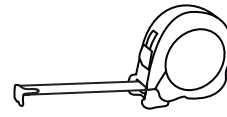
You will need



Hacksaw



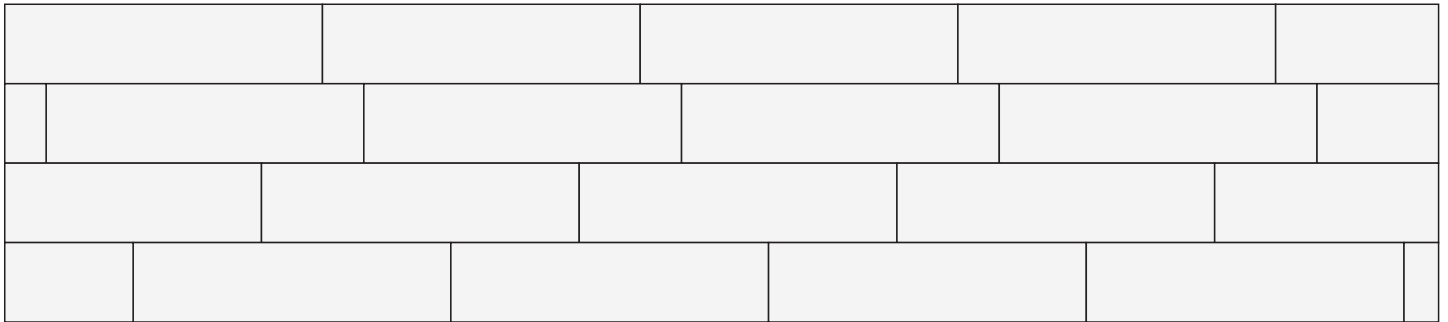
PU Adhesive



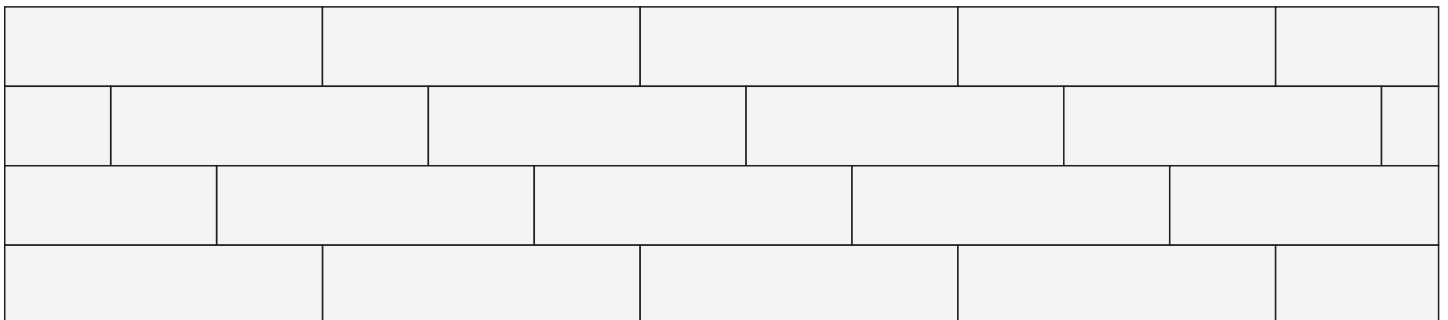
Measuring Tape

Panel layouts

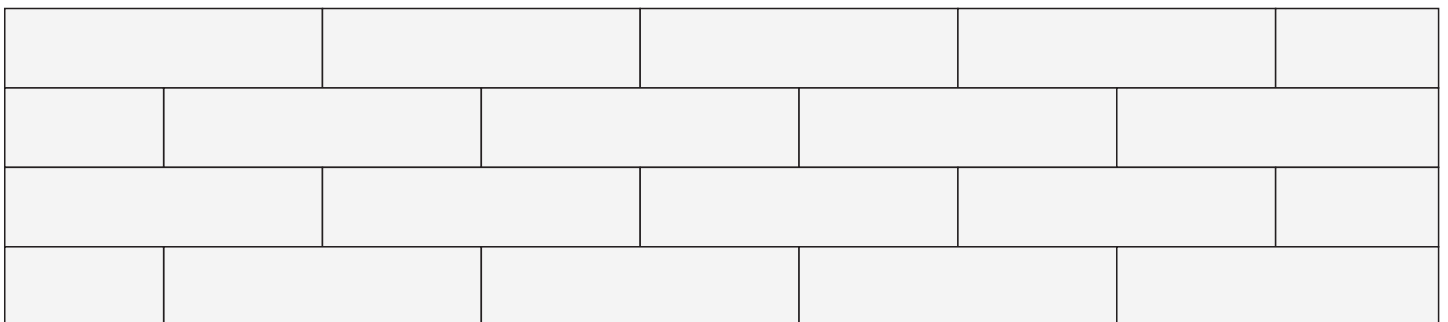
Free shift



1/3 shift



1/2 shift



Useful Tips

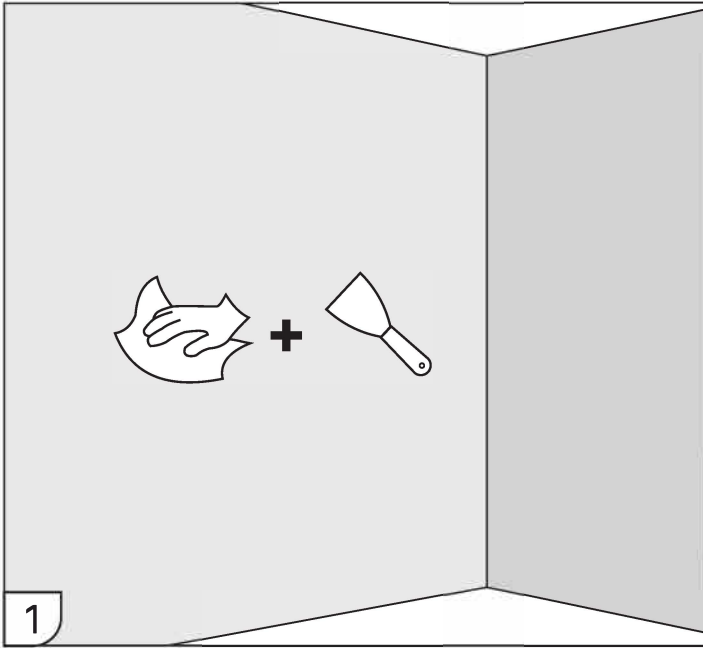
- ◆ The panels can be laid both horizontally and vertically.
- ◆ Before installation, make sure that the selected adhesive is suitable for this type of work

Attention!

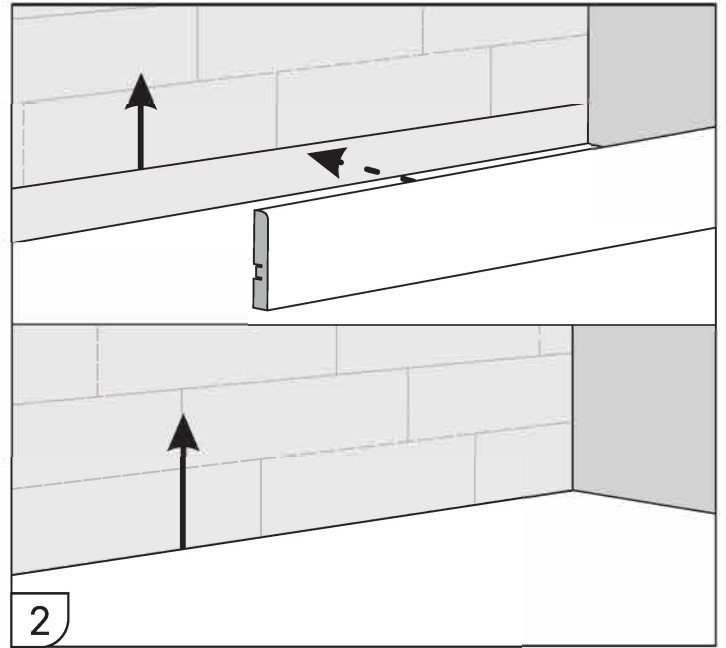
- ◆ Panel cladding is primarily decorative and is not suitable for hanging objects. Choose fasteners that match the substrate material and pass through panels.

Thank you for choosing us!

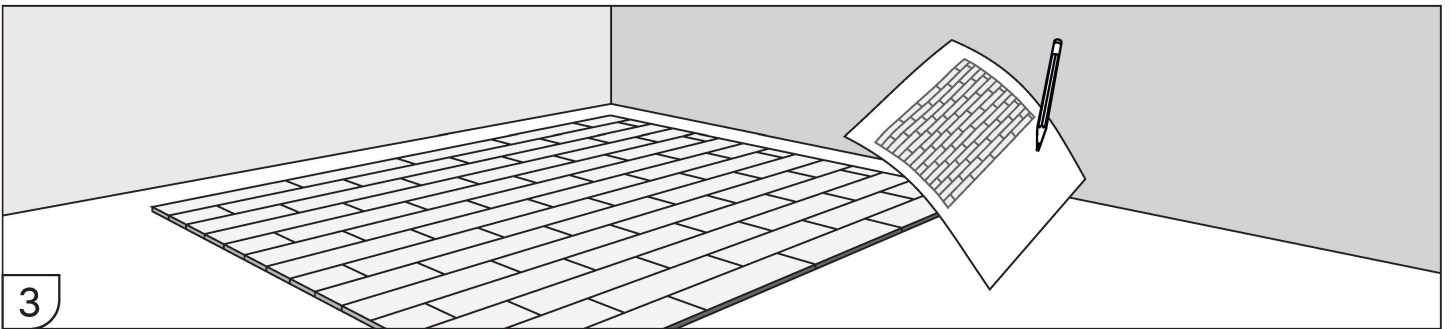
Procedure



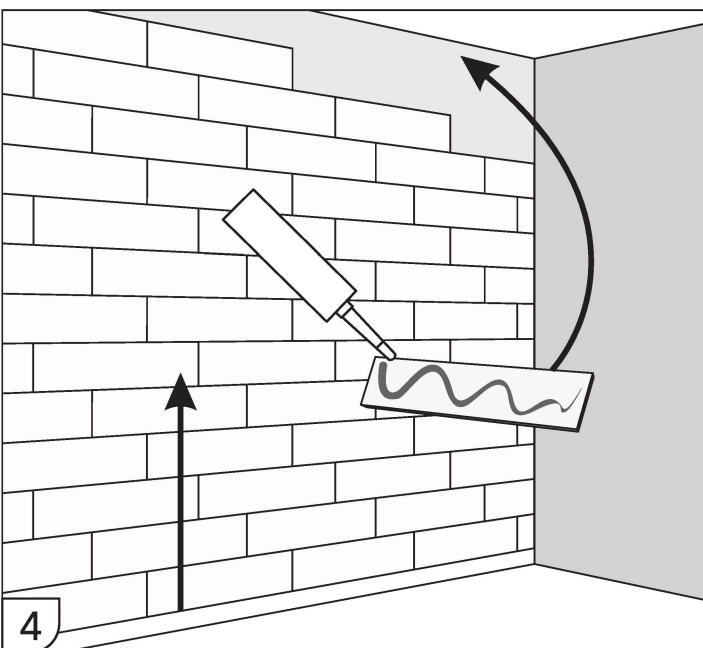
Prepare the surface. The wall must be dry, clean, and leveled, if necessary - primed.



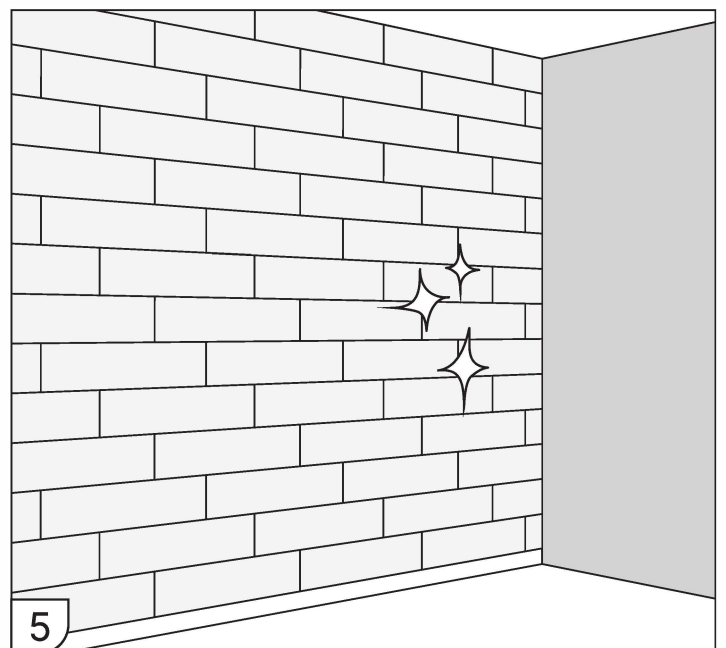
Before installing wall panels, determine where to start. If there is a skirting board, use it as the support. Otherwise, start at the bottom of the wall.



Plan the panel layout based on the project design.



To install wall panels, start at the bottom and work your way up



Yay! It's done!*

*If you are planning to install a stretch ceiling - it is necessary to complete the assembly at the level where the mounting plane for the stretch ceiling will be attached